



## Abito, Clippers Quay, Salford

£625 PCM

Ascend Properties are pleased to offer this large modern studio apartment with parking in the ever popular Abito development.

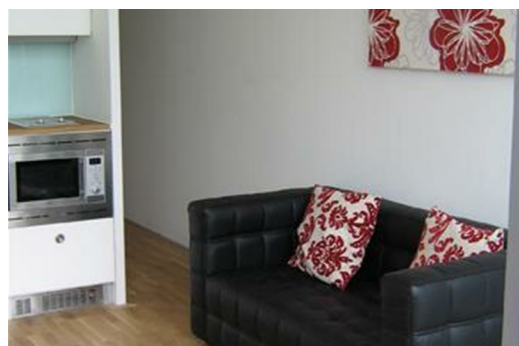
Located in the heart of Salford Quays and with great transport links to the city from the Metrolink only minutes away, you really could not be better located.

Inside you are presented with a large studio apartment with floor to ceiling windows, flooding the apartment with natural light. There's also a fully integrated kitchen, bathroom and pull down bed. The property comes with secure underground parking as an additional bonus.

If you are interested in having a closer look, or have any questions, do get in touch.

And just so you know, the pictures for this apartment are for marketing purposes only, so the internal fixtures, fittings and furnishings may vary.

Available 19th August 2021





Energy Efficiency Rating		Environmental Impact (CO <sub>2</sub> ) Rating	
Current	Potential	Current	Potential
 Current: <b>B</b> Potential: <b>A</b>	78	 Current: <b>D</b> Potential: <b>B</b>	80